

WINGS HAWAII



PEACE // LOVE // LIFE // SEA // TOKENS

Original Designs Handcrafted by Samantha Howard

WINGS HAWAII

Jewelry Handmade on Maui

THE CRYSTAL energizer and amplifier; Transform and Restore.

Each piece is set into a hand-fabricated casing. Each casing is made to fit each individual crystal. All crystals are naturally occurring and no two look the same.



NECKLACE
18" chain

| | 18" | /pc. | total pcs. | total |
|------|-----|-------|------------|-------|
| SS | | \$72 | | |
| GF | | \$90 | | |
| 14 K | | \$360 | | |



STUD EARRINGS

| | | /pc. | total pcs. | total |
|------|--|-------|------------|-------|
| SS | | \$60 | | |
| GF | | \$75 | | |
| 14 K | | \$125 | | |

SS: Sterling Silver
GF: Gold Filled
14 K: Solid 14 Karat Gold

WINGS HAWAII

Jewelry Handmade on Maui

THE PEACE SIGN The universal symbol of peace and non violence; freedom for all.

Each piece is hand cut from reclaimed sterling silver sheet. The peace signs are cut individually allowing for slight differences between each.



NECKLACE

.6" across
chain 17" including clasp

| | /pc. | total pcs. | total |
|-----|-------|------------|-------|
| SS | \$60 | | |
| GP | \$90 | | |
| 14K | \$350 | | |



STUD EARRINGS

.45" circumference each

| | /pc. | total pcs. | total |
|-----|-------|------------|-------|
| SS | \$90 | | |
| GP | \$120 | | |
| 14K | \$500 | | |



RING

.5" circumference
available sizes 6-10

| | /pc. | total pcs. | total |
|-----|-------|------------|-------|
| SS | \$65 | | |
| GP | \$95 | | |
| 14K | \$350 | | |

SS: Sterling Silver
GP: 14 Karat Gold Plated over Sterling Silver
14K: Solid 14 Karat Gold

WINGS HAWAII

Jewelry Handmade on Maui

THE HEART The core of a Human being; to refer to the soul; LOVE.

Each piece is cast from handcarved wax sculptures. Each piece is cast solid with reclaimed sterling silver or gold.



HEART OF GOLD

heart .6"
chain 18"

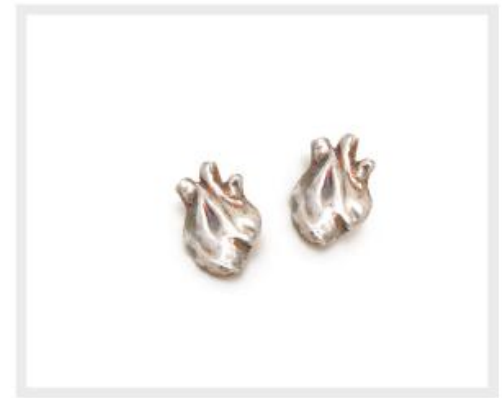
| | /pc. | total pcs. | total |
|-----|-------|------------|-------|
| SS | \$105 | | |
| GP | \$155 | | |
| 14K | \$675 | | |



FOLLOWING MY HEART

heart appx. 1"
chain 30"

| | /pc. | total pcs. | total |
|-----|--------|------------|-------|
| SS | \$450 | | |
| GP | \$600 | | |
| 14K | \$2600 | | |



HEART STUDS

.6" each

| | /pc. | total pcs. | total |
|-----|--------|------------|-------|
| SS | \$200 | | |
| GP | \$295 | | |
| 14K | \$1300 | | |

SS: Sterling Silver

GP: 14 Karat Gold Plated over Sterling Silver

14K: Solid 14 Karat Gold

WINGS HAWAII

Jewelry Handmade on Maui

INFINITY a continuous cycle; forever and ever.

Each infinity symbol is hand fabricated from 14 guage wire and hammered.



FOREVER NECKLACE
44" chain including infinities
13 infinity symbols in each necklace

| | /pc. | total pcs. | total |
|----|------|------------|-------|
| SS | \$75 | | |
| CF | \$85 | | |
| | | | |
| | | | |



FOREVER EARRINGS
2" drop

| | /pc. | total pcs. | total |
|----|------|------------|-------|
| SS | \$65 | | |
| CF | \$75 | | |
| | | | |
| | | | |



FOREVER CUFF

| | /pc. | total pcs. | total |
|----|-------|------------|-------|
| SS | \$125 | | |
| CF | \$145 | | |
| | | | |
| | | | |



FOREVER RING
adjustable to fit any size

| | /pc. | total pcs. | total |
|----|------|------------|-------|
| SS | \$55 | | |
| CF | \$65 | | |
| | | | |
| | | | |

SS: Sterling Silver
CF: Gold Filled

WINGS HAWAII

Jewelry Handmade on Maui

SKULL GIRLS the honoring of humanity in the flesh and the embodiment of consciousness; life.

Each piece is hand cut from reclaimed sterling silver sheet. Each piece is cut individually allowing for each to have inconsistencies.



BAR NECKLACE

bar 1.15"
chain 16" including clasp

| | | /pc. | total pcs. | total |
|----|--|-------|------------|-------|
| SS | | \$85 | | |
| GP | | \$115 | | |
| | | | | |
| | | | | |



STUD EARRINGS

.25" each

| | | /pc. | total pcs. | total |
|----|--|-------|------------|-------|
| SS | | \$75 | | |
| GP | | \$105 | | |
| | | | | |
| | | | | |



BAR RING

.75" bar
available sizes 5-9

| | | /pc. | total pcs. | total |
|----|--|------|------------|-------|
| SS | | \$65 | | |
| GP | | \$95 | | |
| | | | | |
| | | | | |

SS: Sterling Silver
GP: 14 Karat Gold Plated over Sterling Silver

WINGS HAWAII

Jewelry Handmade on Maui

THE SKELETON MERMAID when a dream can come true

The Skeleton Mermaids are hand cut from multiple pieces of sterling silver sheet. The pieces are textured and combined to create a multidimensional piece.



NECKLACE

body measures 2.25"
chain 24"

| | | /pc. | total pcs. | total |
|----|--|-------|------------|-------|
| SS | | \$250 | | |
| GP | | \$310 | | |
| | | | | |
| | | | | |

SS: Sterling Silver

GP: 14 Karat Gold Plated over Sterling Silver

WINGS HAWAII

Jewelry Handmade on Maui

TI LEAVES an emblem of high rank and divine power

Each piece is fabricated from 14 gauge wire and hammered on a Ti leaf stalk, the organic mandrel creates the movement in each piece.



DEW DROP EARRINGS

2.5" drop

| | /pc. | total pcs. | total |
|-----|-------|------------|-------|
| SS | \$60 | | |
| GF | \$70 | | |
| 14K | \$700 | | |



BANGLES available with or without shells

small 7" circumference

med 7.5" circumference

large 8" circumference

| | /pc. | total pcs. | total |
|-----|-------|------------|-------|
| SS | \$30 | | |
| GF | \$35 | | |
| 14K | \$690 | | |

SS: Sterling Silver

GF: Gold Filled

14 K: Solid 14 Karat Gold



RINGS

available sizes 5-10

| | /pc. | total pcs. | total |
|-----|------|------------|-------|
| SS | \$10 | | |
| CF | \$15 | | |
| 14K | \$90 | | |

WINGS HAWAII

Jewelry Handmade on Maui

BUTTERFLIES a life of change; transformation; metamorphosis.

Every wing segment is hand cut with a jeweler's saw from sterling silver sheet. No two wings will ever be exactly the same.



MINI BLING WING NECKLACE
wings measure 1.5" drop
16" chain including clasp

| | /pc. | total pcs. | total |
|----|-------|------------|-------|
| SS | \$112 | | |
| GP | \$155 | | |
| | | | |
| | | | |



BLING WING EARRINGS
1.5" drop

| | /pc. | total pcs. | total |
|----|-------|------------|-------|
| SS | \$200 | | |
| GP | \$255 | | |
| | | | |
| | | | |



BLING WING NECKLACE
wings measure 2" drop
24" heavy chain including clasp

| | /pc. | total pcs. | total |
|----|-------|------------|-------|
| SS | \$175 | | |
| GP | \$220 | | |
| | | | |
| | | | |



WING RING
available sizes 5-9

| | /pc. | total pcs. | total |
|----|-------|------------|-------|
| SS | \$75 | | |
| GP | \$105 | | |
| | | | |
| | | | |

SS: Sterling Silver
GP: 14K Gold Plated over Sterling Silver

PEACE // LOVE // LIFE // SEA // TOKENS

WINGS HAWAII

Jewelry Handmade on Maui

THE CRAB a symbol of success, prosperity and protection; transformation; rebirth.

Each piece is hand cast individually from molds taken from found objects. Each piece is cast from reclaimed sterling silver.



CLAW

claw 1.25" length
chain 30" including clasp

| | | /pc. | total pcs. | total |
|-----|--|--------|------------|-------|
| SS | | \$400 | | |
| GP | | \$490 | | |
| 14K | | \$1600 | | |



CLAW STUDS

appx. .5" ea

| | | /pc. | total pcs. | total |
|-----|--|-------|------------|-------|
| SS | | \$150 | | |
| GP | | \$195 | | |
| 14K | | \$525 | | |



THE CRAB

.75" across body
chain 22" including clasp

| | | /pc. | total pcs. | total |
|-----|--|-------|------------|-------|
| SS | | \$245 | | |
| GP | | \$295 | | |
| 14K | | \$900 | | |

SS: Sterling Silver

GP: 14 Karat Gold Plated over Sterling Silver

14K: Solid 14 Karat Gold

WINGS HAWAII

Jewelry Handmade on Maui

SEAHORSE a sign of good luck to a sailor; strength and power.

Each is cast from a wax sculpture molded from a real seahorse.. Diamonds reclaimed from old vintage jewelry pieces. Available with Blue Sapphire eye.



NECKLACE

body measures 2.25"
chain 20" including clasp

| | | | /pc. | total pcs. | total |
|-----|--|--|--------|------------|-------|
| SSD | | | \$1750 | | |
| SSB | | | \$ 900 | | |
| CPD | | | \$1900 | | |
| GPB | | | \$1200 | | |

SS: Sterling Silver

CP: 14 Karat Gold Plated over Sterling Silver

D: Diamond

B: Blue Sapphire

PEACE // LOVE // LIFE // SEA // T

WINGS HAWAII

Jewelry Handmade on Maui

THUNDERBIRD a symbol of inspiration and transformation; rebirth.

Each piece is hand pierced from reclaimed sterling silver sheet. There are small differences in each birds design to keep each piece unique. Wingspan is 1.5" across and .85" top to bottom.



TBIRD NECKLACE

chain 22"

| | | /pc. | total pcs. | total |
|----|--|-------|------------|-------|
| SS | | \$125 | | |
| CP | | \$195 | | |
| | | | | |
| | | | | |



TBIRD EARRINGS

appx. 3.5" drop
lapis detail

| | | /pc. | total pcs. | total |
|----|--|-------|------------|-------|
| SS | | \$155 | | |
| CP | | \$205 | | |
| | | | | |
| | | | | |



TBIRD RING

available sizes 7-9

| | | /pc. | total pcs. | total |
|----|--|-------|------------|-------|
| SS | | \$125 | | |
| CP | | \$195 | | |
| | | | | |
| | | | | |

SS: Sterling Silver
CP: 14 Karat Gold Plated over Sterling Silver
14K: Solid 14 Karat Gold

WINGS HAWAII

Jewelry Handmade on Maui

WHOLESALE POLICIES

- All jewelry is created on made to order basis.
Cancelling of any items after 5 days of order being place results in loss of 50% deposit.
- 50% deposit is required for all jewelry orders.
- 30 business days are required for production time on all orders unless otherwise specified.
- Wings must be notified within 7 days if there is are any discrepancies with order.
- All returns must be shipped with proper packing and insured for full retail amount. This is the responsibility of the shipping party NOT Wings Hawai'i.
- An RA# must be obtained before any pieces are returned and labelled clearly on the outside of the package.
- Repairs to jewelry is complimentary within 30 days of customer purchase with valid receipt from store; repairs after 30 days will be estimated per situation.
- All orders must be paid in full for an order to ship.
- Shipping will all be done through the USPS unless otherwise requested. Shipment of order will be included in invoice total.

