

The process starts with **renewable pine and eucalyptus wood**, sourced exclusively from sustainably managed and certified* plantations in North America, Western Europe and Brazil.



WOOD PULP Sustainably sourced wood is turned into wood pulp, ready to enter the Naia™ production process in **Eastman's safe and eco-friendly facility** in the U.S., where 100% of Naia™ is produced.



Solvents, such as **acetic acid**, are combined with wood pulp to make cellulose acetate granules.

CELLULOSE ACETATE GRANULES

SAFE & SOUND SOLVENT USE



The granules are dissolved in **acetone** to make a cellulose acetate dope solution.

EASTMAN NAIATM CELLULOSIC YARN PRODUCTION PROCESS

From tree to yarn, the Naia™ production process is designed to ensure the lowest environmental impact. With an extremely low water footprint, Naia™ uses only sustainably sourced wood and safe solvents which are recycled and reused.

Solvents used in the process are **recycled back into the system** for reuse with no release into the environment. Used water is cleaned and returned to the source with routine testing to ensure thriving biodiversity in the local river.

CLOSED LOOP PRODUCTION PROCESS

DRY SPINNING

The dope is finally spun through tiny holes in a spinneret and air dried to form cellulose acetate yarn. Dry spinning Naia™ does not require any water.

yarn

The cellulose acetate yarn is wound onto large bobbins, ready for shipping to fabric mills and Eastman warehouses around the world.

SHIPPING READY BOBBINS

LOW-IMPACT ELEGANCE

The result is a low-impact, sustainable cellulosic yarn which can be used in knits and woven fabrics and easily blended with other fibers. Naia™ is OEKO-TEX 100 Product Class I certified and delivers inherent softness, a cool touch and effortless elegance.



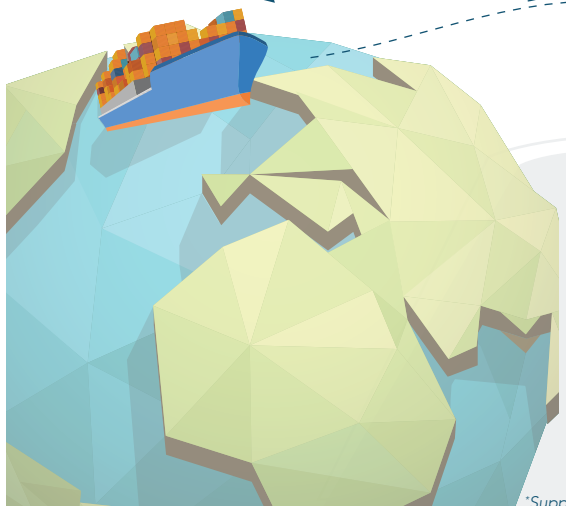
LUXURY



COMFORT



EASE OF CARE



*Suppliers hold internationally sustainable certifications, including FSC® and PEFC Chain of Custody. (Eastman FSC licence code C140711)



Eastman Corporate Headquarters
P.O. Box 431
Kingsport, TN 37662-5280 U.S.A.

U.S.A. and Canada, 800-EASTMAN (8 00-327-8626)
Other Locations, + (1) 423-229-2000

www.eastman.com/locations

Although the information and recommendations set forth herein are presented in good faith, Eastman Chemical Company ("Eastman") and its subsidiaries make no representations or warranties as to the completeness or accuracy thereof. You must make your own determination of its suitability and completeness for your own use, for the protection of the environment, and for the health and safety of your employees and purchasers of your products. Nothing contained herein is to be construed as a recommendation to use any product, process, equipment, or formulation in conflict with any patent, and we make no representations or warranties, express or implied, that the use thereof will not infringe any patent. NO REPRESENTATIONS OR WARRANTIES, EITHER EXPRESS OR IMPLIED, OF MERCHANTABILITY, FITNESS FOR A PARTICULAR PURPOSE, OR OF ANY OTHER NATURE ARE MADE HEREUNDER WITH RESPECT TO INFORMATION OR THE PRODUCT TO WHICH INFORMATION REFERS AND NOTHING HEREIN WAIVES ANY OF THE SELLER'S CONDITIONS OF SALE.

Safety Data Sheets providing safety precautions that should be observed when handling and storing our products are available online or by request. You should obtain and review available material safety information before handling our products. If any materials mentioned are not our products, appropriate industrial hygiene and other safety precautions recommended by their manufacturers should be observed.

© 2018 Eastman. Eastman brands referenced herein are trademarks of Eastman or one of its subsidiaries or are being used under license. The ® symbol denotes registered trademark status in the U.S.; marks may also be registered internationally. Non-Eastman brands referenced herein are trademarks of their respective owners.